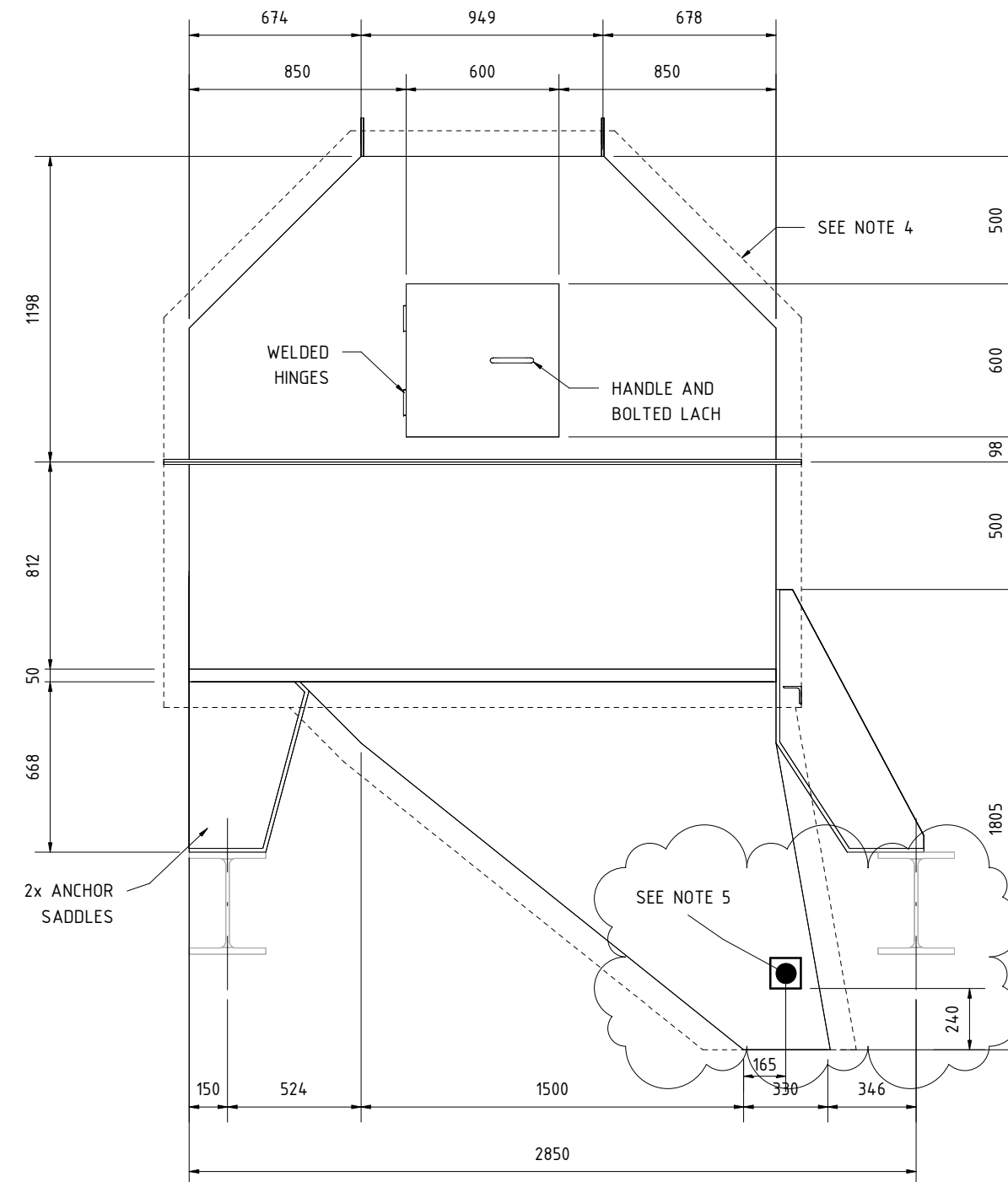
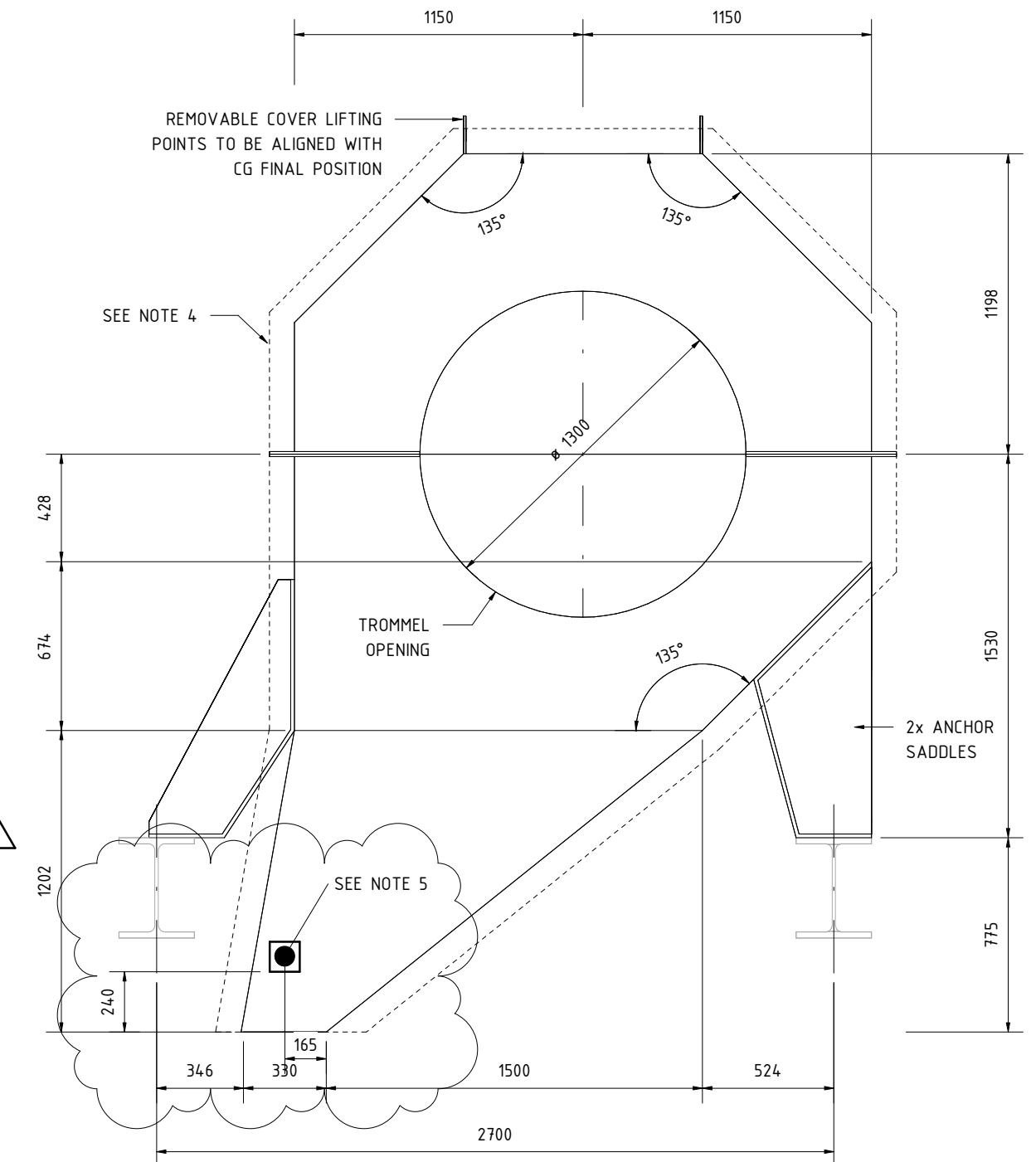


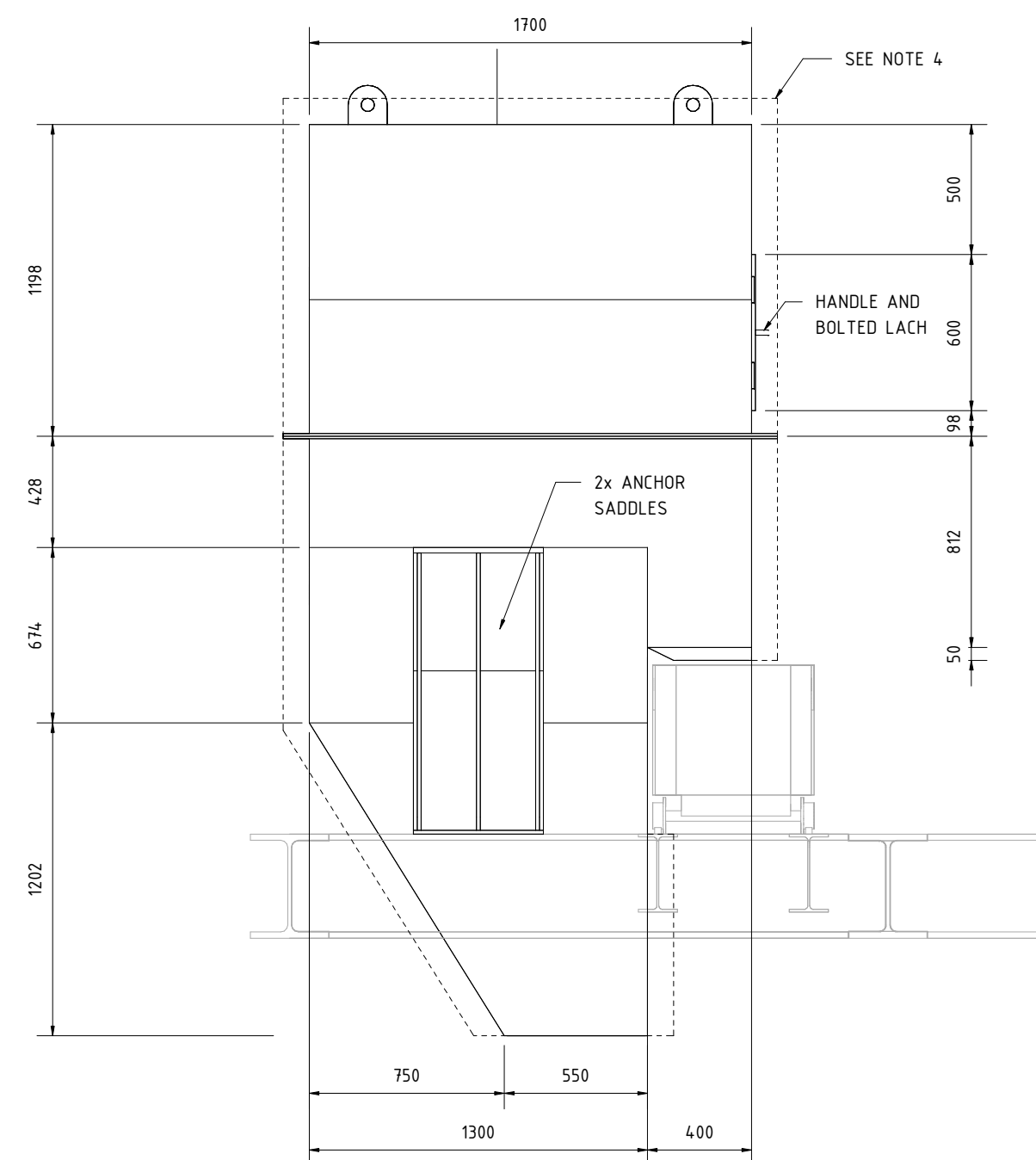
PLANT VIEW  
1 : 25



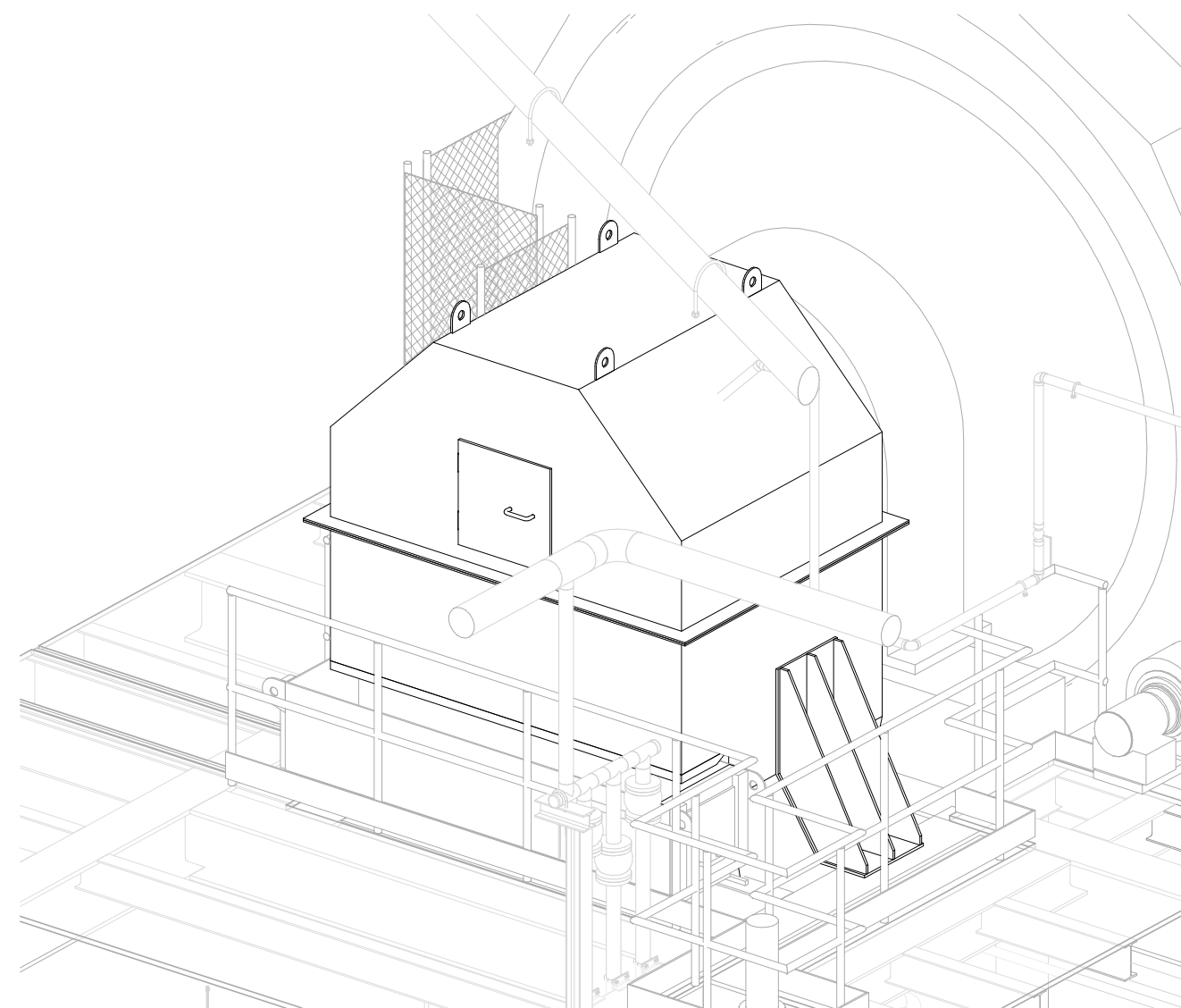
VIEW A  
1 : 25



VIEW B  
1 : 25



VIEW C  
1 : 25



#### Notes:

- 1) FOR DETAIL DESIGN PURPOSES. NOT FOR CONSTRUCTION.
- 2) THIS DRAWING HAS BEEN PRODUCED WITH THE DIMENSIONS PROVIDED BY PROCESS DESIGN ENGINEERING TO INTEGRATE THE EQUIPMENT IN THE 3D MODEL , AND WITH THE EXCEPTION OF THE DIMENSIONS SHOWN THAT ARE CONSIDERED FIXED, THE REST OF DIMENSIONS AND MATERIAL SPECIFICATION THAT ARE REQUIRED FOR THIS EQUIPMENT TO WORK SAFELY AS PER PROCESS REQUIREMENTS ARE TO BE DEFINED BY EQUIPMENT DETAIL ENGINEERING AND FABRICATION SUPPLIER/MANUFACTURER.
- 3) THIS DRAWING SHOWS ONLY BASIC AND FUNCTIONAL DIMENSIONS. STEEL PLATES THICKNESS, REINFORCING, BASE PLATES AND STIFFENERS TO BE ADDED.
- 4) - - - DASHED LINE DENOTES THE CONTOUR LIMIT OF THE STIFFENERS IN ORDER TO AVOID CLASHING WITH THE REST OF ELEMENTS OF THE PLANT.
- 5) FIXING POINT TO BE DEFINED ACCORDING WITH INSTRUMENT EQUIPMENT REQUIREMENTS.

Rev.	Author/Date	Checked/Date	Approved/Date	Description
2	CMV 09/10/2023	CMV 09/10/2023	ATB 09/10/2023	FOR DETAIL ENGINEERING / AS NOTED
1	MRF 17/04/2023	ATB 17/04/2023	ATB 17/04/2023	FOR DETAIL ENGINEERING
0	MRF 17/04/2022	ATB 17/04/2022	ATB 17/04/2022	FOR DETAIL ENGINEERING
Customer: JSC RMG Auramine LLC				Project: BEQTAQARI DETAIL ENGINEERING
Title: 200-CH-008 DIMENSIONAL DRAWING BALL MILL DISCHARGE CHUTE				3d model: P1384-200-RV-200-8-grinding
Area: 200				Scale: 1:25
Format: A2				Doc. code: P1384-200-EQ-007
				Rev: 2